



FLOORING

A variety of choices for a variety of uses!



WORK PLACES



PAVER INSTALLATION



KENNELS



GARAGES



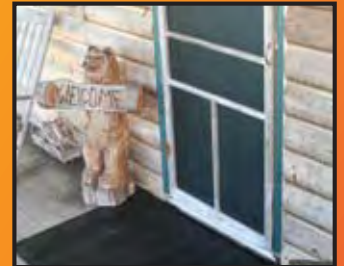
GREENHOUSES



EXERCISE AREAS



TRAILERS/TRUCKS/ATV



DOORWAYS

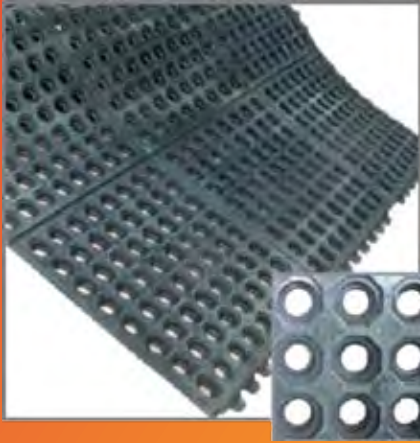
*Little Giant® has all your flooring needs covered!
Great for home, work, farm or personal use. We
carry a full line of Pre-Cut Rubber Utility Mats,
Rolled Rubber Mats and VersaPad™ options.*





PRE-CUT RUBBER UTILITY MATS

Trak-Safe Interlocking Mat



Applications

- Work areas
- Door entrances
- Wash down areas for bikes, ATV's, etc

Features

- Interlocking edges
- Large open design
- Soft, yet durable
- Raised pimples on underside
- Made from recycled rubber and natural rubber

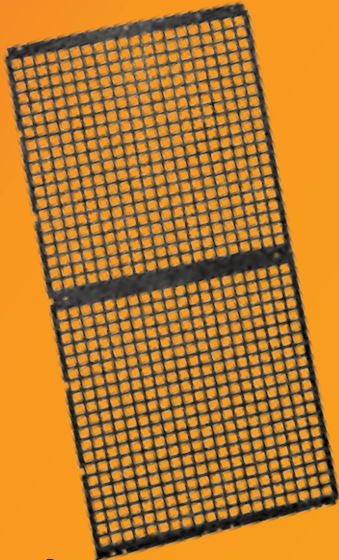
Benefits

- Can cover large areas without movement
- Exceptional drainage characteristics
- Allows water and debris to fall through
- Provides cushion effect under foot

Item #	Mat Size (L x W x H)	Weight
RMIL3636	36" x 36" x 0.59"	15.85



VersaPad™



Applications

- Kennel flooring
- Greenhouse benching
- Paver installation
- Turf landscaping
- Slope protection

Features

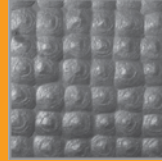
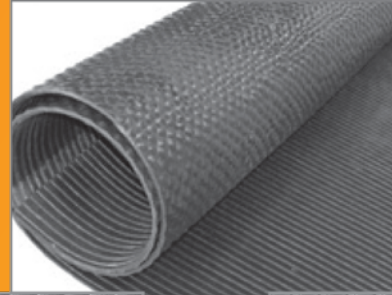
- Interlocking edges
- Non-porous surface - will not harbor bacteria
- Moisture and waste dry fast
- Made from polypropylene

Benefits

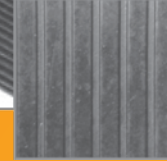
- Surface allows for proper drainage and airflow for plants and animals
- Provides a great foundation under pavers while allowing for drainage
- Protects turf and soil from pedestrian foot traffic
- Holds 10 lbs for every square foot

Item #	Mat Size (L x W x H)	Weight
VP2349	24" x 48.625" x 0.5"	8.05

Pre-Cut Utility Mats



Back of Mat



Front of Mat

*Sizes and colors may vary due to mass production

Applications

- Exercise areas
- Kennels
- Barns
- Horse stalls
- Trailers
- Garages
- ATV/truck beds
- Work benches
- Camping

Features

- Textured top for traction
- Grooved bottom for drainage
- Tailored sizes – minimal cutting
- Non-porous surface - will not harbor bacteria
- Made from recycled rubber and SBR

Benefits

- Will not shrink, curl or crumble
- Easy to clean
- Easy lifting and moving

Item #	Mat Size (L x W x H)	Weight
RM3660	60" x 36" x 0.25"	22
RM4096	96" x 40" x 0.25"	43.78
RM4872	72" x 48" x 0.25"	38.6
RM4896	96" x 48" x 0.25"	50.5
RM6096	96" x 60" x 0.25"	65
RM60120	120" x 60" x 0.25"	71



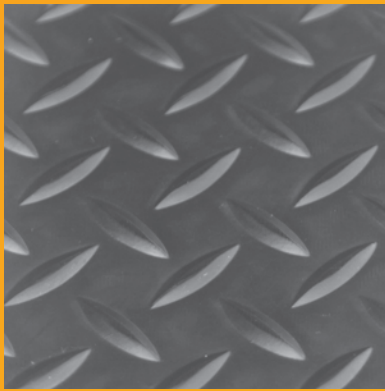
Mat Specifications (for all Pre-cut Utility Mats)

Weight.....	7.32 kg/m ²
Hardness.....	65 Shore A Nominal
Density.....	1350 kg/m ³
Elongation.....	> = 180%
Shearing Strength.....	< 0.60 (N/mm ³)
Temperature Stability.....	30 70
Compression Recovery.....	After 22 hours 75%
Tensile Strength.....	400 PSI
Critical Radiant Flux.....	0.11 watts/sq
Thermal Resistance.....	150 ppi

ROLLED RUBBER MATS



Check Plate



- Applications**
- Hallways, corridors, etc.
 - High traffic areas
 - Doors and walkways

- Features**
- Long lengths, non-porous
 - Surface protection
 - Anti-slip metal pattern
 - Made from recycled rubber and SBR

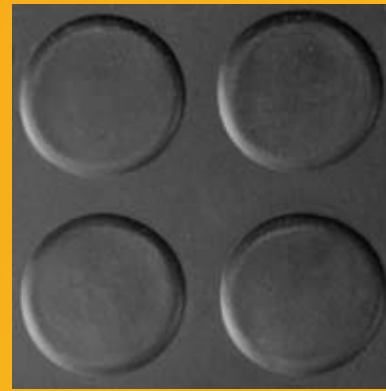
Benefits

- Avoids bacteria build-up
- Easy to clean
- Dries quickly
- Reduces chance of injury

Item #	Mat Size (L x W x H)	Weight
RMDIA380	80' x 3.25' x 0.125"	211
RMDIA440	40' x 4' x 0.25"	305



Round Dot



- Applications**
- Hallways, corridors, etc.
 - High traffic areas
 - Behind retail counters

- Features**
- Long lengths
 - Non-porous
 - Anti-Slip
 - Made from recycled rubber and SBR

Benefits

- Avoids bacteria build-up
- Easy to clean
- Dries quickly
- Reduces chance of injury

Item #	Mat Size (L x W x H)	Weight
RMDOT349	49' x 3.25' x 0.15"	189



Wide Rib



- Applications**
- High traffic areas
 - Door and walkways

- Features**
- Long lengths
 - Non-porous
 - Surface protection
 - Made from recycled rubber and SBRR

Benefits

- Avoids bacteria build-up
- Easy to clean
- Dries quickly
- Reduces chance of injury

Item #	Mat Size (L x W x H)	Weight
RMWR349	49' x 3.25' x 0.15"	164



See back page for display options & merchandising ideas.

Mat Specifications (for all Rolled Rubber Mats)

Hardness.....	65 Shore A Nominal
Density	1500 kg/m3
Elongation.....	> = 180%
Shearing Strength.....	< 0.60 (N/mm3)
Temperature Stability	30 70
Compression Recovery.....	After 22 hours 75%
Tensile Strength	450 PSI
Critical Radiant Flux.....	0.11 watts/sq
Tear Resistance	150 ppi



DISPLAYS

5 Slot Mat Rack



FREE DISPLAY
with purchase of 15 rolls!

Item #	Display Size (L x W x H)	Weight
RMRACK	39" x 22.75" x 80"	65

3 Roll Mat Dispenser with Cutter



FREE DISPLAY
with purchase of 3 rolls!

Item #	Mat Size (L x W x H)	Weight	Bar Length
RM3DISP	60.25" x 30.75" x 59.25"	95	60.25"

- Display allows you to cut to your desired size
- Easily cut a straight line using a utility knife to eliminate excess waste
- Display holds a maximum of 1,500 lbs
- 2 x 4 board is not included

Flooring Rack Merchandising Ideas

These racks are space-saving and feature colorful graphics to draw attention to the product and generate sales. They can be displayed in many different areas of a store, including:

- **Home Improvement** – Cut mats can be used as a welcome mat by the front door of a home; Rolled mats can cover the entire floor of a mudroom. The mats can also be used as flooring for a tool workshop or to cover the surface of a workbench.
- **Sporting Goods** – Mats can be used under individual pieces of weight equipment or flooring can be used to cover the entire floor of a workout room.
- **Pet** – the mats work well as flooring for kennels or dog homes. Pet day care centers can use the flooring to cover an entire "play room" for dogs.

- **Automotive department** – Great for covering the floor of a garage or creating a non-skid surface in a truck bed or on a trailer floor.
- **Equine/Livestock Area** – The mats are great not only in horse stalls, but also as flooring in a trailer. They can also be used to create a non-skid floor in dairy barns or other farm buildings.
- **Lawn & Garden** – Use to create a non-skid surface on deck stairs or by an outdoor pool.

The possibilities are endless! With a little imagination, you can find the best place in your store to display these products and maximize sales!

Miller Manufacturing
Glencoe, MN 55336 USA